

Barrier #	Barrier	Remediation Options
1	Missing access aisle on APS3	1 Adjust parking layout to include an access aisle with an accessible route to a curb ramp
2	Missing international symbol of accessibility on APS3	1 Include new signage with the international symbol of accessibility in new parking layout
3	Accessible aisle does not align with CR1	1 Adjust curb ramp and accessible parking/aisles to allow access from accessible aisle to CR1
4	Cross slope on the bottom landing of CR1 is too steep	1 Adjust curb ramp to meet required cross slope of less than 2.0%
5	ED1, ED2, ED3, and ED4 do not connect to an accessible ramp	1 Adjust curb ramp to meet required cross slope of less than 2.0%
6	No ISA on accessible doors (ED1, ED3, and ED4)	1 Add the international symbol of accessibility to all accessible doors
7	No directional signage on non-accessible doors (ED2)	1 Add directional signage to the door
8	Speech/Hearing Impaired Signage missing from Cashier Window	1 Add proper signage to the Cashier window in a visible location
9	Speech/Hearing Impaired Signage missing from Presenter Window	1 Add proper signage to the Presenter window in a visible location
10	All exterior doors do not meet proper closing speeds and push requirements	1 Adjust closers to meet closing speed push requirements of greater than 5 seconds and requirements of less than 8.5 lbs
11	Interior Circulation Door does not have the proper Push/Pull clearances	1 Move objects around door to give the proper push/pull clearances
12	Interior Circulation Door does not meet the proper closing speed and push requirements	1 Adjust closer to meet closing speed push requirements of greater than 5 seconds and requirement of less than 5 lbs
13	Self-Service Counter does not have Staff Assistance Signage	1 Add proper Staff Assistance signage in a visible location at the Self-Service counter
14	Men's Restroom door does not meet the proper closing speed and push requirements	1 Adjust closer to meet closing speed push requirements of greater than 5 seconds and requirement of less than 5 lbs
15	Vertical grab bar missing from Men's Accessible Stall	1 Install vertical grab bar per ADA code
16	Men's accessible stall door is not self closing	1 Adjust hinge so that the door is self closing
17	Women's Restroom door does not meet the proper closing speed and push requirements	1 Adjust closer to meet closing speed push requirements of greater than 5 seconds and requirement of less than 5 lbs
18	Women's Accessible Stall does not meet proper clear floor space in width	1 Adjust restroom walls as necessary to provide a proper width of 60" in the accessible stall
19	Vertical grab bar missing from Women's Accessible Stall	1 Install vertical grab bar per ADA code
20	Flush valve on wrong side of toilet in Women's Accessible Stall	1 Replace Plumbing hardware to provide a flush valve on the wide side of the toilet
21	Women's accessible stall door is not self closing	1 Adjust hinge so that the door is self closing
22	Soap dispenser in Men's Restroom is mounted too high	1 Remount Soap Dispenser at 48" max.
23	Soap dispenser in Women's Restroom is mounted too high	1 Remount Soap Dispenser at 48" max. A.F.F.
24	Mirror in Women's Restroom is mounted too high	1 Remount Mirror's so the bottom edge is at 50" max A.F.F.

BARRIER REPORT AND REMOVAL PLAN

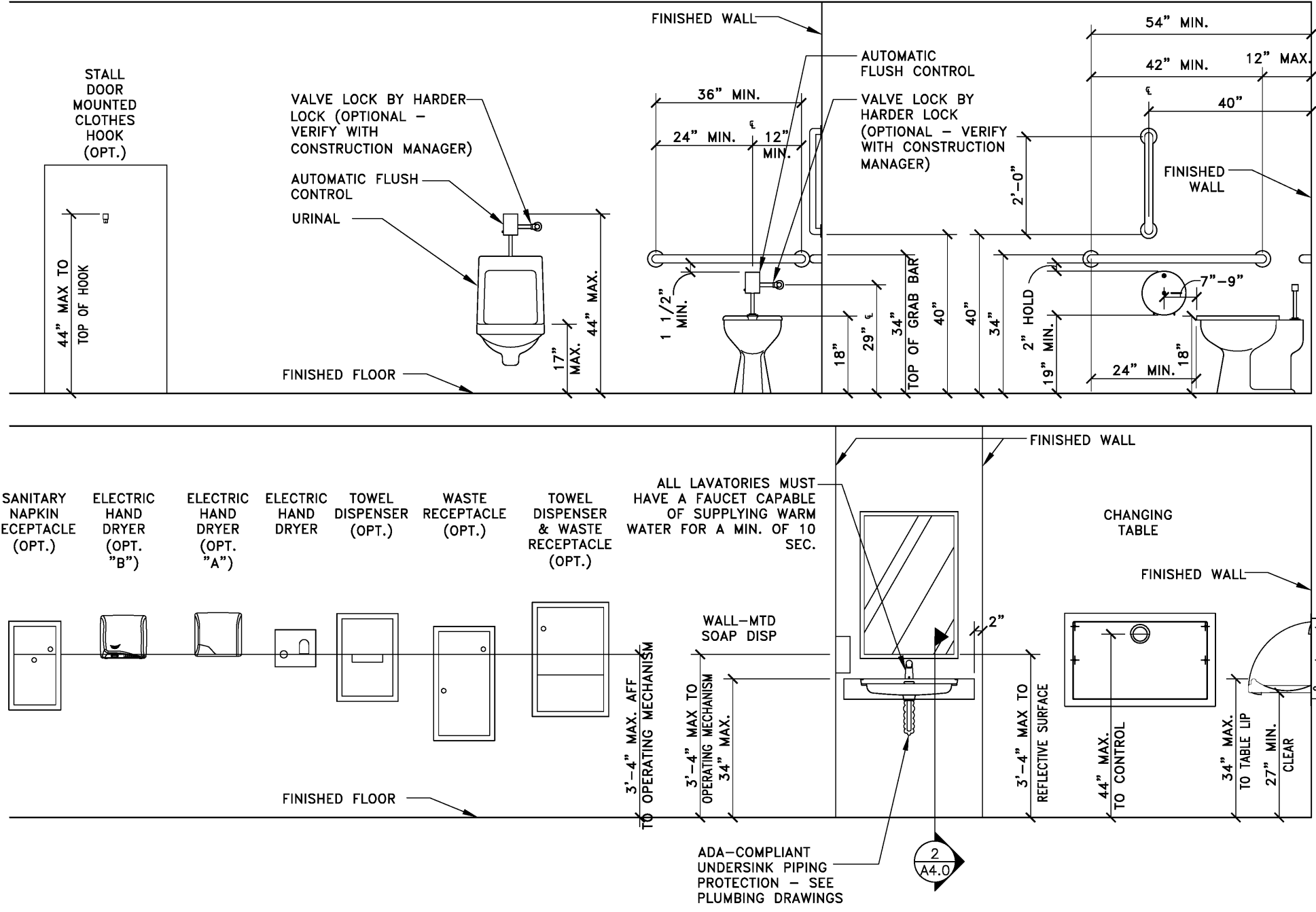
ADA-3

	ITEM (SEE NOTE 2)	MANUF. MODEL #	SUPPLIER	BACKUP SUPPORT (SEE NOTE 3)
1A	GRAB BAR 42"	BOBRICK B-6806X42	HUGHES SUPPLY (866) 310-3576 MCDCOORD@HAJOCA.COM	(1)2x6 4'-0" LONG CENTER MOUNTED
1B	GRAB BAR 36"	B-6806X36		
1C	GRAB BAR 24"	B-6806X24		
2	TOILET TISSUE DISPENSER, JUMBO, SURFACE MOUNTED	BRADLEY 5424	HUGHES SUPPLY (866) 310-3576 MCDCOORD@HAJOCA.COM	FRAME WALL OPENING PER MANUFACTURER'S RECOMMENDATIONS
3	SANITARY NAPKIN RECEPTACLE, RECESSED (OPTIONAL)	BOBRICK B-354	HUGHES SUPPLY (866) 310-3576 MCDCOORD@HAJOCA.COM	
4A	HAND DRYER, ENERGY EFFICIENT MODEL, ADA, ALUMINUM BRUSHED	WORLD DRYER L-971 SlimDri	HUGHES SUPPLY (866) 310-3576 MCDCOORD@HAJOCA.COM	FRAME WALL OPENING PER MANUFACTURER'S RECOMMENDATIONS
4A OPTION	HAND DRYER, ENERGY EFFICIENT MODEL, ADA, STAINLESS STEEL	DYSON AIRBLADE V	HUGHES SUPPLY (866) 310-3576 MCDCOORD@HAJOCA.COM	
4B	TOWEL DISPENSER & WASTE RECEPTACLE, COMBINATION, RECESSED (OPTIONAL)	BOBRICK B-3974	HUGHES SUPPLY (866) 310-3576 MCDCOORD@HAJOCA.COM	
5	MIRROR, CHANNEL FRAME	BOBRICK B-165 2436 24"x36"	HUGHES SUPPLY (866) 310-3576 MCDCOORD@HAJOCA.COM	
6A	SOAP DISPENSER, COUNTER MOUNTED, 6" SPOUT (OPTIONAL)	BOBRICK B-82216	HUGHES SUPPLY (866) 310-3576 MCDCOORD@HAJOCA.COM	
6B	SOAP DISPENSER, WALL-MOUNTED	BOBRICK B-2112	HUGHES SUPPLY (866) 310-3576 MCDCOORD@HAJOCA.COM	
7	BABY CHANGING TABLE, HORIZONTAL, RECESSED, ADA COMPLIANT	KOALA KARE KB100-MDTA	HUGHES SUPPLY (866) 310-3576 MCDCOORD@HAJOCA.COM	FRAME WALL OPENING PER MANUFACTURER'S RECOMMENDATIONS
7 OPTION	BABY CHANGING TABLE, HORIZONTAL, RECESSED, ADA COMPLIANT, ALL STAINLESS	KOALA KARE KB110-MDRA	HUGHES SUPPLY (866) 310-3576 MCDCOORD@HAJOCA.COM	FRAME WALL OPENING PER MANUFACTURER'S RECOMMENDATIONS
8	DIAPER CONTAINER (OPTIONAL)	-	BY OWNER	
9	CLOTHES HOOK	BRADLEY 917	HUGHES SUPPLY (866) 310-3576 MCDCOORD@HAJOCA.COM	

NOTES:
1) SEE 6/A4.0 FOR ACCESSORY MOUNTING HEIGHTS
2) SELECT ONE ITEM FROM ITEM GROUPS 4 & 6, VERIFY WITH AREA CONSTRUCTION MANAGER.
3) CUT BACK-UP SUPPORTS BETWEEN STUDS SO FACE OF SUPPORT IS FLUSH W/WALL STUD

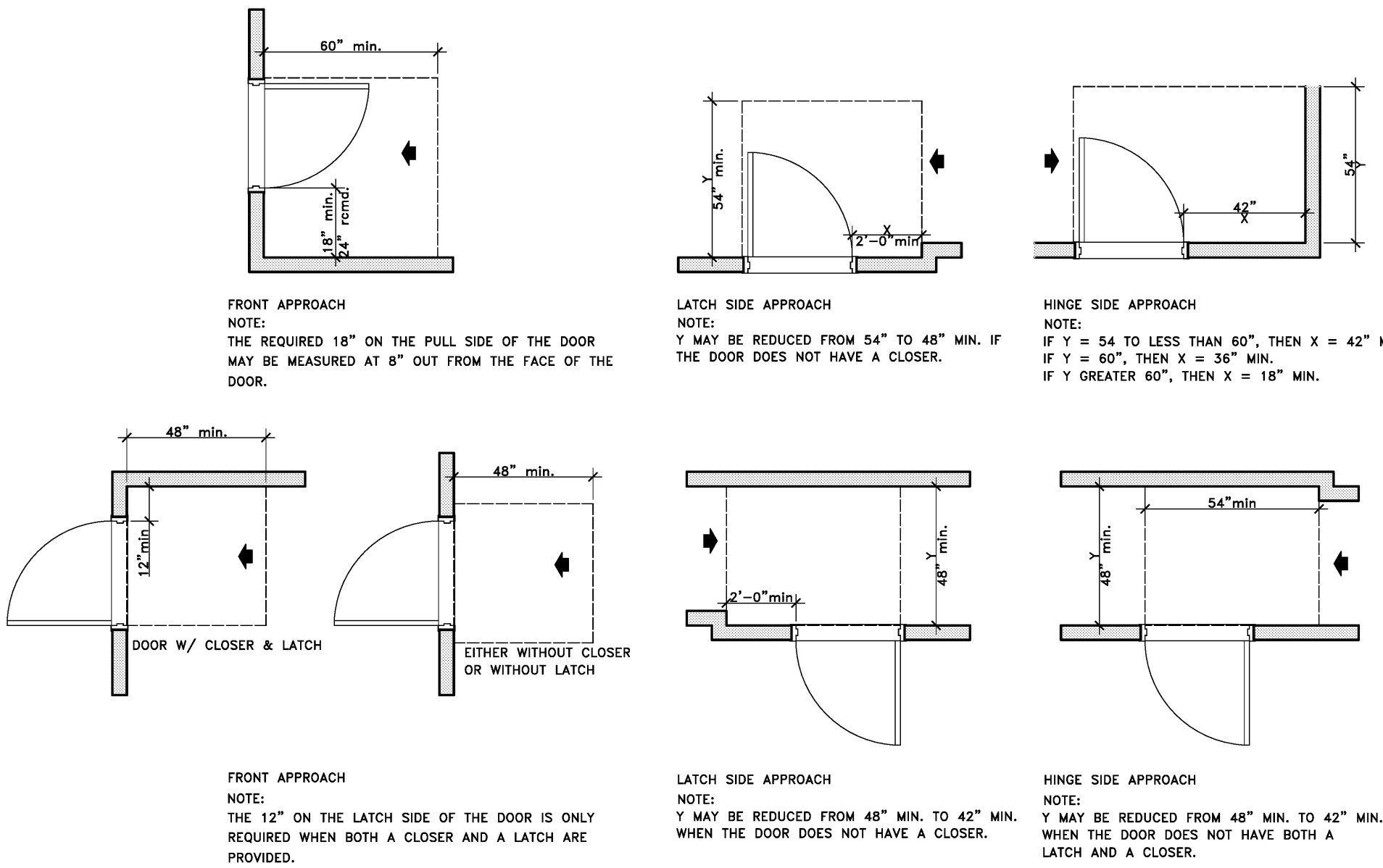
FOR INFORMATION ONLY
IF NEW FIXTURES ARE TO BE INSTALLED VERIFY
SELECTION W/ ACM AND O/O

ADA-1



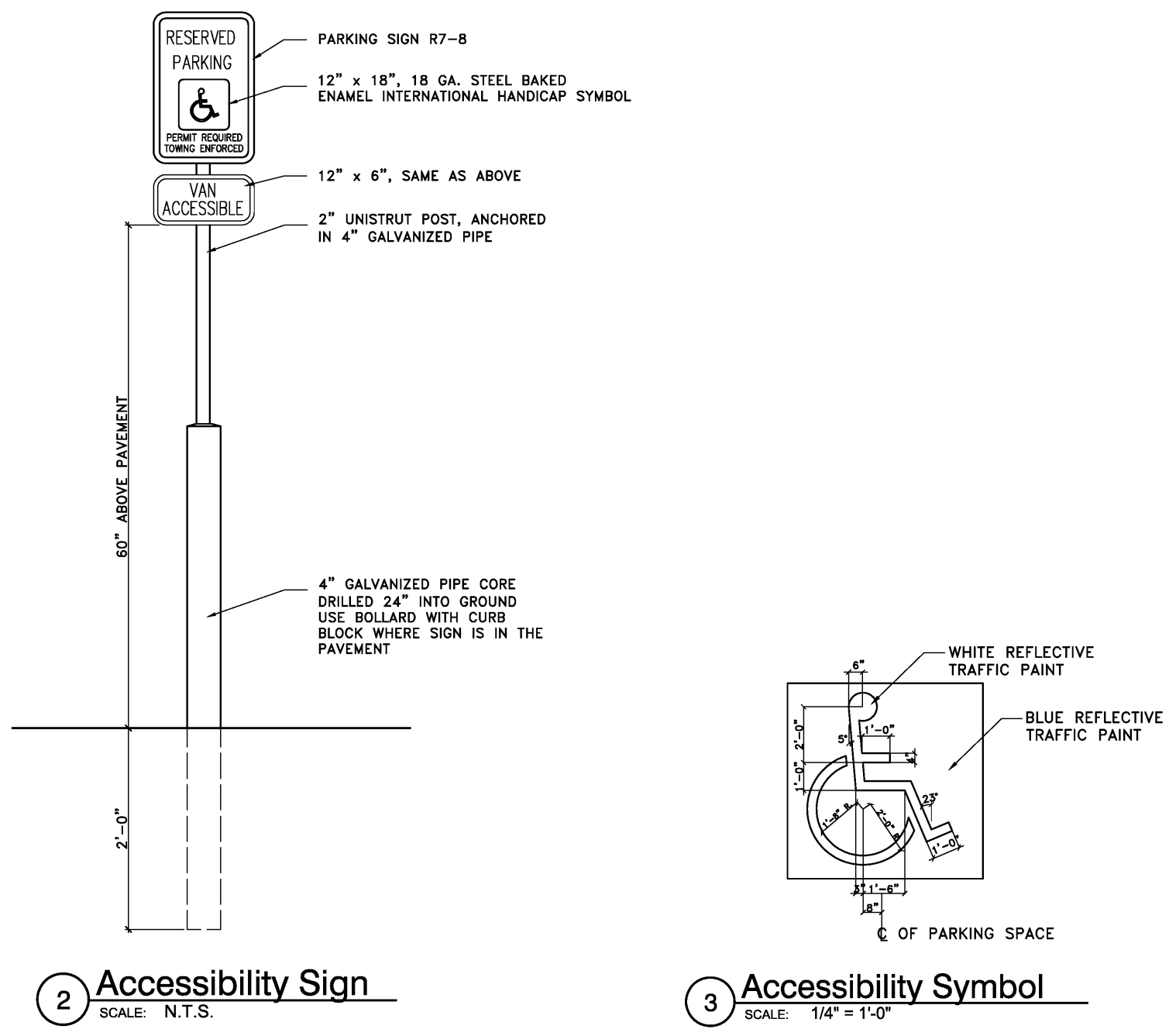
RESTROOM FIXTURE AND ACCESSORY ELEVATIONS
NOTE: TOLERANCES ARE + 0"/- 1" FOR MAX. DIMENSIONS, + 1"/- 0" FOR MIN. DIMENSIONS,
AND + 1"/- 1" FOR OTHER DIMENSIONS.

ADA-2



FOR INFORMATION ONLY
SEE FLOOR PLAN FOR SPECIFIC DETAILS

ADA-4



FOR INFORMATION ONLY
SEE CIVIL DRAWINGS FOR SPECIFIC DETAILS

ADA-5

BY

DESCRIPTION

REV

DATE

PREPARED BY:

Taylor Kempkes

ARCHITECTS, P.A.

300 CENTRAL AVENUE, SUITE 200

HOUSTON, TEXAS 77002

PH: 281.422.1166 FAX: 281.422.1167

PREPARED FOR:

McDonald's USA, LLC

© 2015 McDonald's USA, LLC

These drawings and specifications are the confidential and proprietary property of McDonald's USA, LLC and shall not be copied or reproduced without written authorization. The contract documents were prepared by McDonald's USA, LLC and shall not be used for any other project without the written consent of McDonald's USA, LLC. Use of these drawings for reference or example on another project requires the use of the contract documents for that project and the use of these drawings on any other project is not authorized.

DRAWN BY:

MP

STD ISSUE DATE:

NOV. 2015

REVIEWED BY:

R.K.

DATE ISSUED:

06-28-2017

WILDERVILLE, TN

TITLE:

MRP 2.0 STO REMODEL BUILDING

DESCRIPTION:

CORE 16 EXTERIOR

SHEET NO.:

BR1.0

Barrier Removal Plan

SITE ID:

041-0760

SITE ADDRESS:

21320 HWY 22 Parkers Crossroads

41-0760.00.0

ELITE CONSTRUCTION GROUP

LAKE JACKSON, TX

PHONE: 979-288-0712

NOTE: THESE PRINTS HAVE BEEN

REDUCED BY 50 PERCENT. SCALE

WILL BE 50 PERCENT OF WHAT IS

NOTED ON PLANS